

# CEI SERVICES

PTY.LTD.

Electrical Contractor  
Electrical Engineering  
Switchboard Manufacture  
Process Control and Design  
Project Management

## CORPORATE CAPABILITY STATEMENT





## TABLE OF CONTENTS

<a href="#">ABOUT OUR COMPANY</a>	05
<a href="#">OUR VALUES</a>	06
<a href="#">CORE COMPETENCIES</a>	07
<a href="#">PROJECT MANAGEMENT</a>	08
<a href="#">ENGINEERING AND DESIGN</a>	09
<a href="#">SAFETY AND RISK MANAGEMENT</a>	10
<a href="#">RESOURCES AND CAPACITY</a>	11
<a href="#">ORGANISATIONAL CHART</a>	12
<a href="#">HEAD OFFICE &amp; SERVICE LOCATIONS</a>	14
<a href="#">COMPANY INFORMATION AND INSURANCE</a>	15





## ABOUT OUR COMPANY

CEI Services is a Victorian based, mid-tier electrical consultancy service specialising in the water sector.

With over 35 years of industry experience, CEI are placed at the forefront of engineering, design, manufacture and installation.

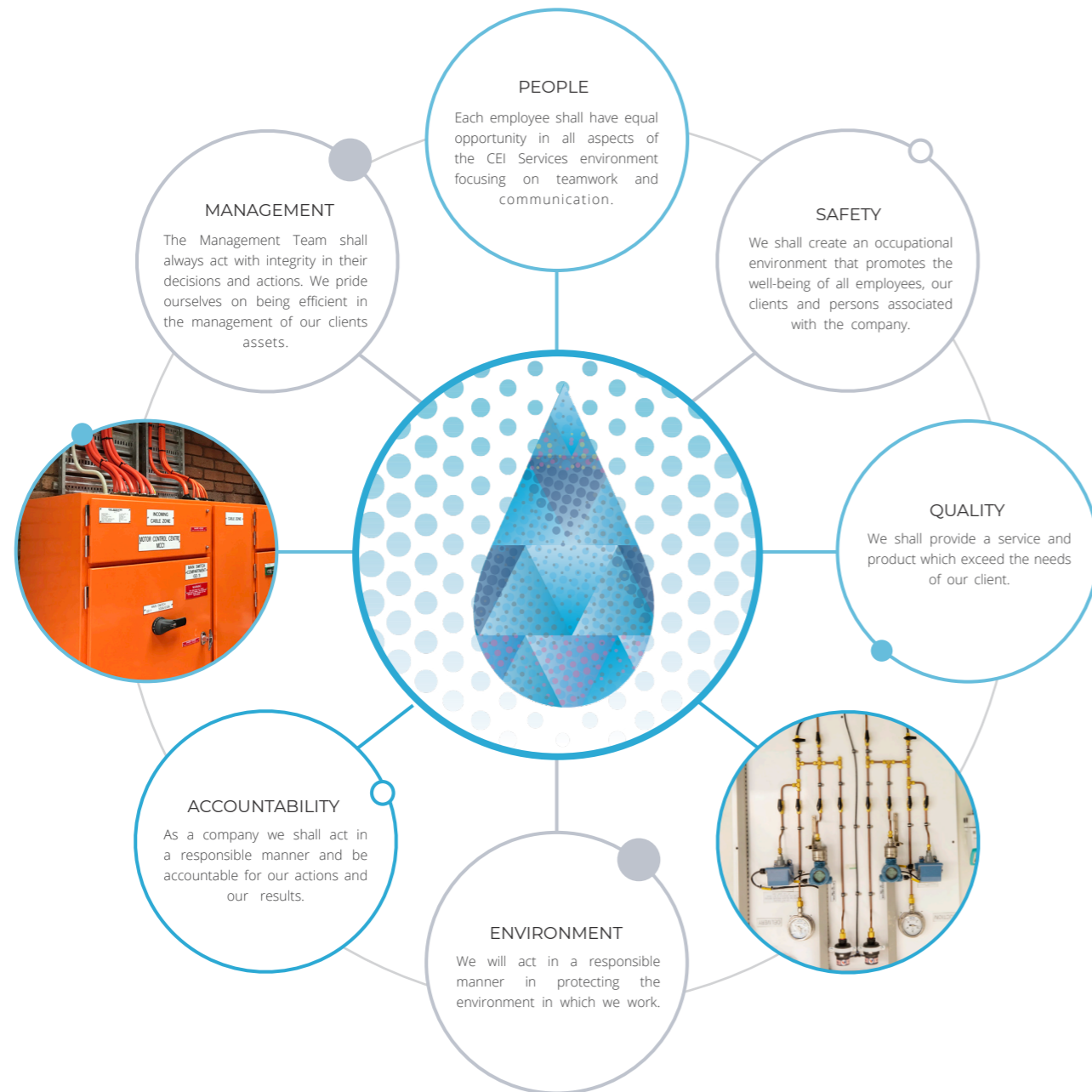
With cutting edge engineering and design combined with skilled project managers, CEI Services pride themselves on bringing their clients a full portfolio of services that combine the necessary skills backed with their ongoing commitment to the highest level of Occupational Health and Safety.

OUR DESIGN TEAM ARE  
EXPERTS WITHIN THE WATER  
AND WASTEWATER INDUSTRY

CEI has a commitment to providing a vertically integrated business strategy allowing our company to be the number one contender in manufacturing switchboards and provision of electrical services specialising in Turn-key solutions; including water treatment, construction, mining, commercial and food retail outlets.

It is our mission to provide our clients with highly ethical and professional standards of service with superior quality installed products which exceed customer requirements and expectations. We are continuously refining and improving our techniques through innovation and design to bring our clients competitiveness within the market along with integrity in our decisions and actions.





## OUR VALUES

**At CEI we commit to providing exceptional service to our clients. We adhere to a strong sense of integrity in our decisions and actions and from this we aim to always be the leaders in service and value for our customers.**

- We provide an equal opportunity platform for all our employees to perform to their best abilities, focusing on teamwork and communication while recognising them as an important asset to the company.
- We will always be accountable for providing optimal products and services that will exceed our customer and partners expectations whilst remaining competitive within our industry market.
- We commit to creating an occupational environment that promotes the safety and well-being of all employees, our clients and persons associated with the company.

## CORE COMPETENCIES

With a wide range of core competencies, CEI can manage your project from start to finish ensuring that the plan runs smoothly from our cutting-edge design and project management to fully integrated electronically controlled drive systems.



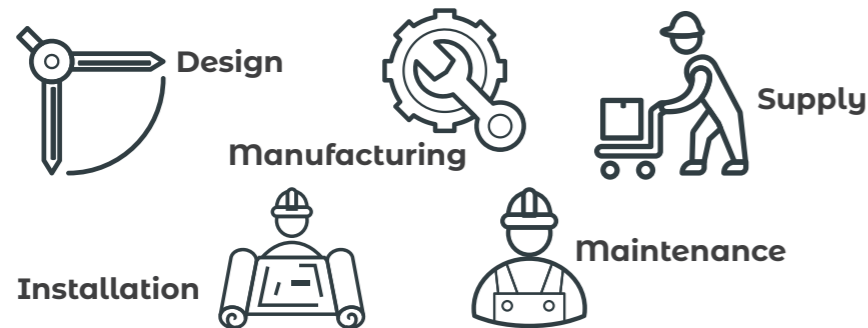
*CEI Services includes into their scope of work a comprehensive, easy to use, Operation and Maintenance Manual(s) ensuring that even when the project has ended you still have the tools for all aspects of plant operation.*



## PROJECT MANAGEMENT

When you partner with CEI for Project Management you will have peace of mind knowing that our Project Management Plan (PMP) provides all projects with a custom all in one plan that encompasses every aspect of the project.

### CEI SERVICES PRIDES ITSELF ON TURN-KEY START TO FINISH PROJECT SOLUTIONS



We work closely with our clients to ensure that our projects are clearly defined, completed on time even with variations, and on budget.

Working closely with our engineering and design team, our Engineering Manager and Senior Engineers work alongside our highly skilled Draftsperson and push the boundaries in excellence whilst delivering projects on time.

#### The PMP ensures the following key aspects are met.

- |   |  |
|---|--|
| <ul style="list-style-type: none"> <li>• Project Delivery</li> <li>• Sub-Contractor Management</li> <li>• Switchboard Manufacturing</li> <li>• Management of Contract</li> <li>• Management of Site Workforce</li> <li>• Financial Reporting</li> <li>• Client Liaison</li> </ul> | <ul style="list-style-type: none"> <li>• Quality</li> <li>• Work, Health, Safety and Environment Policies and Procedures</li> <li>• Emergency Planning</li> <li>• Audit / Workplace Action Items</li> <li>• Risk Management</li> <li>• Incident Recording, Investigation and Analysis</li> </ul> |
|---|--|



## ENGINEERING AND DESIGN:

The CEI design team are experts within the water and wastewater industry. Our services are built on the background of Turn-key Solutions providing innovative ideas for the Water Industry.

CEI ensures constant consultation with our clients to form strong relationships and to gain an understanding of all the environmental and operational conditions that could affect the design.

CEI Services uses AutoCAD for detailed Switchgear Assemblies, Electrical Schematics and Site Installation drawings.

Our engineering ranges from light and power distribution through to fully designed treatment plants and pipeline pump stations incorporating latest technologies for motor control and process integration via Programmable Logic Controllers (PLC), Operator Interface Panels (OIP), Remote Terminal Units (RTU) and SCADA communications.

Assisting the Design Division is our dedicated Commissioning Team, streamlining the commissioning aspects of the job and capturing the critical information. The Commissioning Team is built from SCADA personnel through to our Engineers and Electrical personnel on the ground. Part of the Commissioning Teams' role is to train the Client's Operations Crew and implement the Maintenance Manuals.

#### Our designs comply with the requirements of:

- The Building Code of Australia.
- The Victorian Office of the Chief Electrical Inspector.
- Government and other authorities having relevant jurisdiction.
- Australian Standards.
- Other standards and codes of the Standards Association of Australia applicable to the installation.
- Safety in Design.
- Manufacturer's recommendations for the type of equipment being used.
- Commonwealth Government Energy initiatives.

#### Our designs incorporate:

- Supply Authority service and installation rules.
- Harmonic filters.
- PLC I/O Schedule.
- Battery Backup 24VDC supplies as required.
- Generator sizing (if required).
- Detailed engineering design of equipment to suit material and equipment supplied.





## SAFETY AND RISK MANAGEMENT



At CEI we pride ourselves on our outstanding OHS and Risk Assessment strategies. So much so that we employ a full-time OHS Manager to oversee every project and ensure that everyone is on board with our 'Look. Is it safe?' culture which stems from hands on experience.

We have an integrated approach to OHS and Risk Management and are constantly reviewing and refining our processes. We ensure we keep up to date with changes in current legislation, Australian Standards, Codes of Practice and Safe Work whilst incorporating this into our regular system reviews and audits as part of our systematic continuous improvement philosophy.

CEI always aims to exceed its moral, legal and economic obligations to reduce its Occupational, Health, Safety and Environment Risk.

The main objectives of the Occupational Health, Safety and Environment Systems are:

- To promote and secure the Safety, Health and Welfare of persons employed by CEI Services and that of any persons, who by location, may be affected by its operations.
- To identify areas of risk at the project planning stage and to introduce strategies to eliminate, reduce or control the risk.
- To provide a safe system of work.
- To define areas of responsibility.
- To eliminate, reduce and control the hazards to which persons are exposed to.
- To assist in securing a safe and hygienic work environment.
- To conduct regular occupational inspections and audits ensuring compliance with the Safety Management Plan.
- To provide information, instruction, training and supervision to all employees as necessary to enable them to carry out their work in a safe manner.
- To foster co-operation and consultation between both employee and employer in the formulation and implementation of Safety, Health and Environmental Standards.



### SAFETY FIRST

*With the above objectives the goal of CEI Services is to promote a safe workplace whilst reducing the exposure to risk to "As low as is reasonably practicable".*

## RESOURCES AND CAPACITY

CEI Services primary works are within the water and wastewater industries.

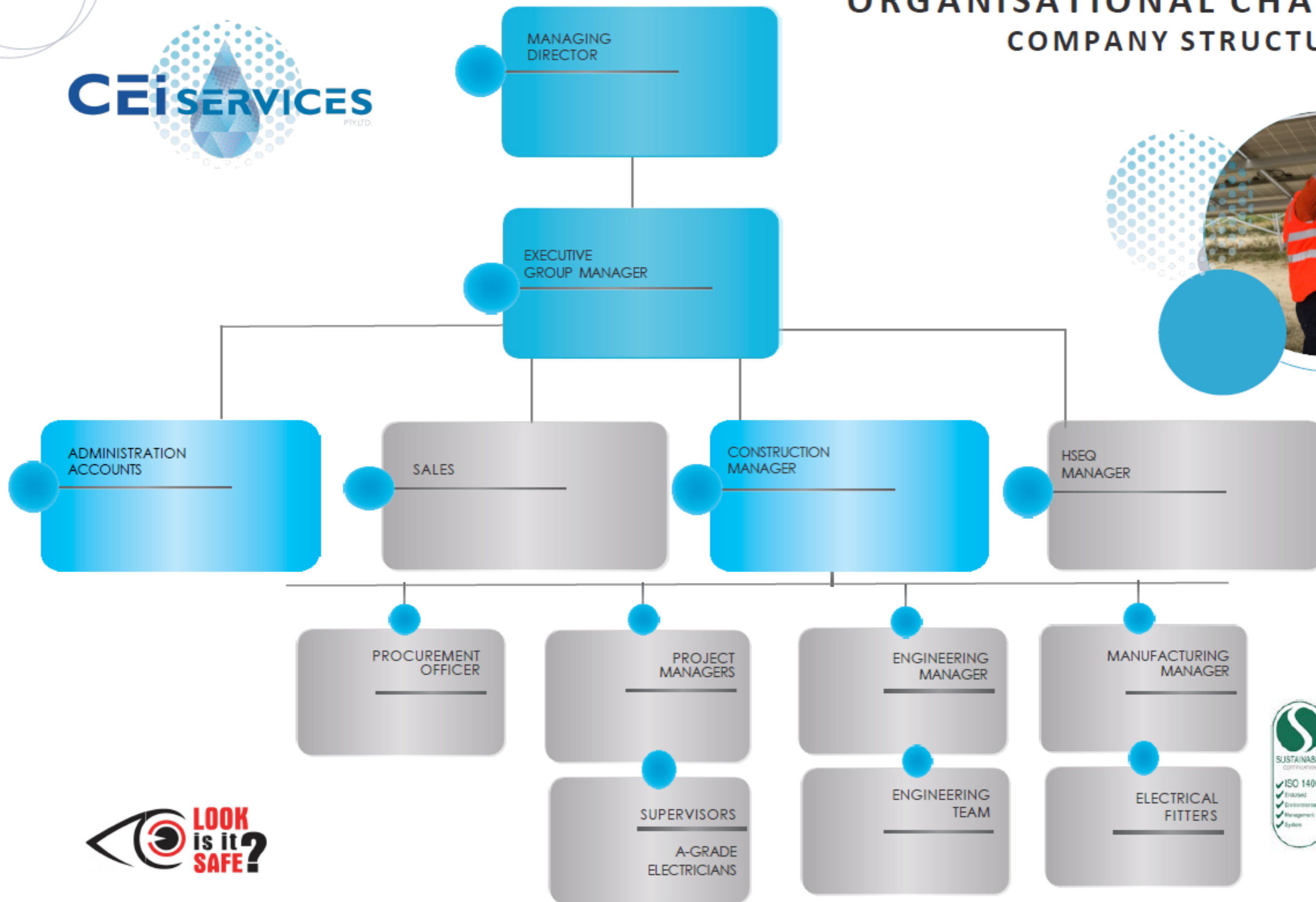
Our Turn-Key Solution to achieving the desired outcome is realised through industry involvement. CEI Services' depth of experience in engineering, management, manufacture and installation is the key to our successful projects; being privately owned enables us to increase our resource capacity when required.

## TURN-KEY SOLUTIONS



**ELECTRICAL DESIGN - CONSTRUCTION - MANUFACTURING  
BUSINESS AND PROJECT MANAGEMENT**





# ORGANISATIONAL CHART COMPANY STRUCTURE







## SERVICING AUSTRALIA

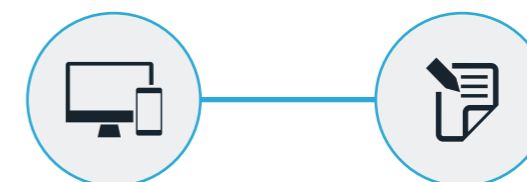


## CORPORATE INFORMATION

CEI Services Pty Ltd provides ongoing specialist electrical consultancy services. The company draws on in excess of 35 years specialising in engineering, design, manufacture, installation and servicing.

### COMPANY DETAILS

Company Name:	CEI Services Pty Ltd
Australian Business Number (ABN):	ABN: 46 605 189 053
Australian Company Number (ACN):	ACN: 605 189 053
Head Office Address:	1C Industry Circuit Kilsyth South
Telephone Number:	03 8799 5766
Email:	Enquiries@ceiservices.com.au



## INSURANCE

### COMPANY INSURANCE

TYPE	LEVEL OF COVER
Professional Indemnity	\$20M
Public and Product Liability	\$20M
Workers Compensation	Exchanging ID 14470419





ENGINEERING, DESIGN,  
ELECTRICAL, MANUFACTURING,  
INSTALLATION & SERVICING

With over 35 years of experience, CEI Services provides cutting edge specialist engineering & design services to a wide range of businesses.

1C Industry Circuit Kilsyth South  
Office | 03 8799 5766  
Enquiries@ceiservices.com.au  
www.ceiservices.com.au